



THE AITKEN



COLLECTION



# INTRODUCTION

The Hillman Minx was a mid-sized family car that British car maker Hillman produced from 1931 to 1970. There were many versions of the Minx over that period, as well as badge-engineered variants sold by Humber, Singer, and Sunbeam.

From the mid-1950s to the mid-1960s, the Minx and its derivatives were the greatest-volume sellers of the "Audax" family of cars from Rootes, which also included the Singer Gazelle and Sunbeam Rapier. The final version of the Minx was the "New Minx" launched in 1967, which was part of the "Arrow" family and essentially a basic version of the Hillman Hunter. Generally, the Minx was available in four-door saloon and estate forms, with a 1496-cc engine.

The Hillman Super Minx was a slightly larger model offered during the Audax era.

Throughout the life of the Minx, there was usually an estate version—and, from 1954 to 1965, a short-wheelbase estate, the Hillman Husky, and a van derivative known as the Commer Cob.

The Minx model name was revived briefly – along with the "Rapier" name, as applied to the Sunbeam Rapier version of the Audax family – as a special edition late in the life of the Talbot Alpine / Talbot Solara cars, produced by Chrysler Europe after its takeover of the Rootes Group.



# INVENTORY

<u>1938 Hillman Minx Sports Tourer - "AOIFE"</u>	<u>4</u>
<u>1938 Hillman Minx Sports Tourer - "AOIFE 2"</u>	<u>5</u>
<u>1936 Hillman Minx DH (Drop Head) - DH Red</u>	<u>6</u>
<u>1938/39 Holden Body Ute - Holden B Ute</u>	<u>7</u>
<u>1938 Hillman Minx Ute - Hope Ute</u>	<u>8</u>
<u>1937 Hillman Hawk Sedan - Hawk</u>	<u>9</u>
<u>1937 Hillman Hawk Sedan - Hawke 2</u>	<u>10</u>
<u>1938 Hillman 14 - ED</u>	<u>11</u>
<u>1938 Hillman 14 - Green Wedding 14</u>	<u>12</u>
<u>1938 Hillman 14 - Army 14</u>	<u>13</u>
<u>1938 Hillman 14 - Green Wreck 14</u>	<u>14</u>
<u>1938 Hillman 14 - Green Convert 14</u>	<u>15</u>
<u>1938 Hillman Minx - Marty</u>	<u>16</u>
<u>1935? Hillman Minx - The Duck</u>	<u>17</u>
<u>1936 Hillman Minx - Green 36 Minx</u>	<u>18</u>
<u>1936 Hillman Minx - Brown 36 Farm Minx</u>	<u>19</u>
<u>1938 Hillman Minx - Spare Blue Minx</u>	<u>20</u>
<u>1938 Hillman Minx - Spare Black Minx</u>	<u>21</u>
<u>1938 Hillman Minx - Spare Cream Minx</u>	<u>22</u>
<u>1938 Hillman Minx - Half Minx</u>	<u>23</u>



# 1938 Hillman Minx Sports Tourer - "AOIFE"



<b>Inventory Number:</b>	001
<b>Make:</b>	Hillman
<b>Model:</b>	Minx Sports Tourer
<b>Year:</b>	1938
<b>Nickname:</b>	"AOIFE"
<b>Location:</b>	Melbourne Metro
<b>Body Type:</b>	Sedan/Convertible
<b>Colour:</b>	Nullarbor Sand
<b>Transmission:</b>	4 Cylinder - all-synchromesh 4 Speed Gear Box
<b>Condition:</b>	Fully Restored in Top Condition
<b>Registered:</b>	Yes
<b>Spare Parts:</b>	N/A

## Comments

Designed to meet the needs of the sporting motorist who appreciates the combination of ultra smart appearance and practical comfort, the new Hillman minx sports tourer, with its perfect line, remarkably comfortable seating accommodation and spacious built in luggage compartment, completely fulfils these requirements. The full folding windscreen is ideal for the driver, who, in the heat of summer, enjoys the thrill of driving hard into a stiff breeze, whilst the excellent all-weather equipment ensures comfort in the cold weather. The upholstery is carried out in genuine leather and is carefully chosen to suitably contrast with the attractive colour combinations in which the car is offered, such as Nullarbor Sand and Red, Ivory and Green, Sports Red, etc. In short, an ideal combination of beauty and utility.



# 1938 Hillman Minx Sports Tourer - "AOIFE 2"



<b>Inventory Number:</b>	002
<b>Make:</b>	Hillman
<b>Model:</b>	Minx Sports Tourer
<b>Year:</b>	1938
<b>Nickname:</b>	"AOIFE2"
<b>Location:</b>	Melbourne Metro
<b>Body Type:</b>	Sedan/Convertible
<b>Colour:</b>	Nullarbor Sand
<b>Transmission:</b>	4 Cylinder - all-synchromesh 4 Speed Gear Box
<b>Condition:</b>	Unrestored
<b>Registered:</b>	No -
<b>Spare Parts:</b>	Used mainly for spare parts

## Comments

Designed to meet the needs of the sporting motorist who appreciates the combination of ultra smart appearance and practical comfort, the new Hillman minx sports tourer, with its perfect line, remarkably comfortable seating accommodation and spacious built in luggage compartment, completely fulfils these requirements. The full folding windscreen is ideal for the driver, who, in the heat of summer, enjoys the thrill of driving hard into a stiff breeze, whilst the excellent all-weather equipment ensures comfort in the cold weather. The upholstery is carried out in genuine leather and is carefully chosen to suitably contrast with the attractive colour combinations in which the car is offered, such as Nullarbor Sand and Red, Ivory and Green, Sports Red, etc. In short, an ideal combination of beauty and utility.



# 1936 Hillman Minx DH (Drop Head) - DH Red



<b>Inventory Number:</b>	003
<b>Make:</b>	Hillman
<b>Model:</b>	Minx Drop Head (DH)
<b>Year:</b>	1936
<b>Nickname:</b>	DH- red
<b>Location:</b>	Melbourne Metro
<b>Body Type:</b>	Sedan
<b>Colour:</b>	
<b>Transmission:</b>	4 Cylinder - all-synchromesh 4 Speed Gear Box
<b>Condition:</b>	Unrestored
<b>Registered:</b>	No
<b>Spare Parts:</b>	Used mainly for spare parts

**Comments**



# 1938/39 Holden Body Ute - Holden B Ute

**ANNOUNCE THE *Thrifty* 1939 HILLMAN UTILITY**

**8 Beautiful Models**

1939 Hillman Utilities carry complete, able, 4-4 cars. There are 8 popular standard types from which to choose. Features include: New principle of carburation giving amazing economy; 10 h.p. engine develops 11 b.h.p. at 4,100 r.p.m.; Enclosed sump; all-weather floor; powerful disc-type brakes; fast gear ratios; welded chassis frame seven times stronger than the standard type, and many other noteworthy refinements.



**A Speedy, Economical Prestige Builder FOR EVERY BUSINESS!**

**IN** your business, do you still use a costly-to-run large truck for express delivery and special orders, etc.? Today you need a quick, economical delivery system to enable you to handle light loads speedily.

The Hillman Minx Utility is sturdily built, to give trouble-free service for a long mileage life, and to carry its loads economically and quickly.

In the interests of an improved delivery service at lower cost, call at our showrooms for a demonstration of the thrifty Hillman Minx Utility that offers such outstanding value.

A smart, thrifty Hillman Minx Utility would serve you well and help to reduce your delivery costs. The 1939 model is now available with a full range of eight popular body styles.

The Minx has always been England's outstanding light car—the new models will carry its well-founded popularity to even greater heights. Without doubt

**Now... ALSO ON DISPLAY**

**The 1939 HILLMAN MINX**  
Most beautiful of all 10 h.p. cars!

**THE** 1939 Hillman Minx, in a range of attractive colours, is now on view at our showrooms with recent new features, and a host of refinements especially incorporated for comfortable driving.



Inventory Number:	004
Make:	Hillman/Holden
Model:	Ute
Year:	1938/39
Nickname:	Holden B Ute
Location:	Melbourne Metro
Body Type:	Utility
Colour:	
Transmission:	
Condition:	Unrestored
Registered:	No
Spare Parts:	Used mainly for spare parts

Comments



# 1938 Hillman Minx Ute - Hope Ute



<b>Inventory Number:</b>	005
<b>Make:</b>	Hillman
<b>Model:</b>	Minx Ute
<b>Year:</b>	1938
<b>Nickname:</b>	Hope - Ute
<b>Location:</b>	Melbourne Metro
<b>Body Type:</b>	Utility
<b>Colour:</b>	
<b>Transmission:</b>	
<b>Condition:</b>	Fully Restored
<b>Registered:</b>	Yes
<b>Spare Parts:</b>	N/A

Comments



# 1937 Hillman Hawk Sedan - Hawk

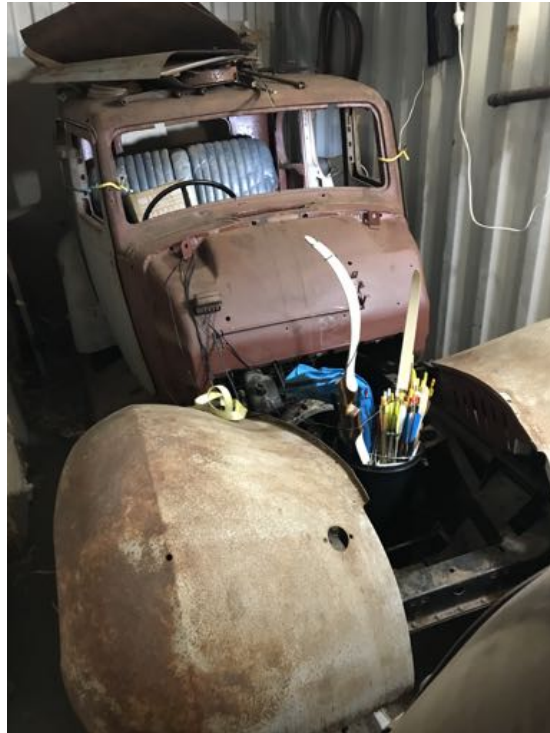


<b>Inventory Number:</b>	006
<b>Make:</b>	Hillman
<b>Model:</b>	Hawk Sedan
<b>Year:</b>	1937
<b>Nickname:</b>	Hawk
<b>Location:</b>	Melbourne Metro
<b>Body Type:</b>	Sedan
<b>Colour:</b>	White
<b>Transmission:</b>	
<b>Condition:</b>	Partly Restored
<b>Registered:</b>	Yes
<b>Spare Parts:</b>	N/A

**Comments**



# 1937 Hillman Hawk Sedan - Hawke 2

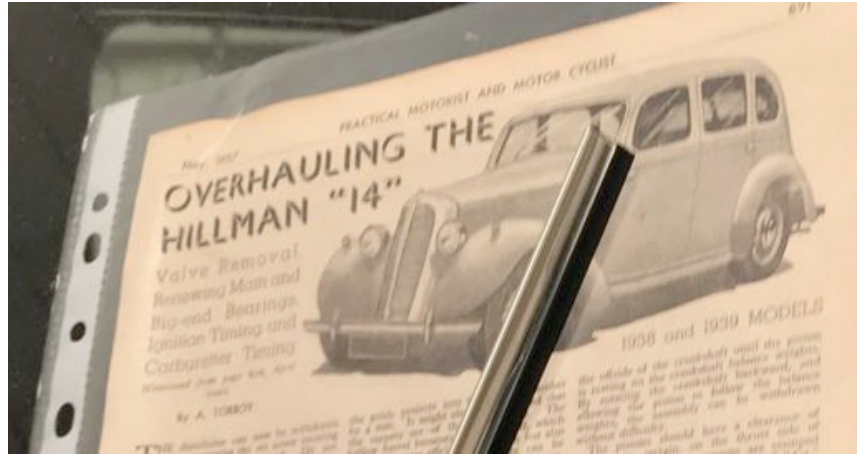


<b>Inventory Number:</b>	007
<b>Make:</b>	Hillman
<b>Model:</b>	Hawk Sedan
<b>Year:</b>	1937
<b>Nickname:</b>	Hawk2
<b>Location:</b>	Melbourne Metro
<b>Body Type:</b>	Sedan
<b>Colour:</b>	
<b>Transmission:</b>	
<b>Condition:</b>	Unrestored
<b>Registered:</b>	
<b>Spare Parts:</b>	Mainly used for spare parts

**Comments**



# 1938 Hillman 14 - ED



<b>Inventory Number:</b>	008
<b>Make:</b>	Hillman
<b>Model:</b>	14
<b>Year:</b>	1938
<b>Nickname:</b>	Ed
<b>Location:</b>	Melbourne Metro
<b>Body Type:</b>	
<b>Colour:</b>	
<b>Transmission:</b>	
<b>Condition:</b>	Restored - Running but requires further repairs
<b>Registered:</b>	Yes
<b>Spare Parts:</b>	N/A

**Comments**



# 1938 Hillman 14 - Green Wedding 14



<b>Inventory Number:</b>	009
<b>Make:</b>	Hillman
<b>Model:</b>	14
<b>Year:</b>	1938
<b>Nickname:</b>	Green Wedding 14
<b>Location:</b>	Melbourne Metro
<b>Body Type:</b>	Sedan
<b>Colour:</b>	Green
<b>Transmission:</b>	
<b>Condition:</b>	Fully Restored
<b>Registered:</b>	Yes
<b>Spare Parts:</b>	N/A

Comments



# 1938 Hillman 14 - Army 14



<b>Inventory Number:</b>	010
<b>Make:</b>	Hillman
<b>Model:</b>	14
<b>Year:</b>	1938
<b>Nickname:</b>	Army 14
<b>Location:</b>	Melbourne Metro
<b>Body Type:</b>	
<b>Colour:</b>	
<b>Transmission:</b>	
<b>Condition:</b>	Unrestored
<b>Registered:</b>	
<b>Spare Parts:</b>	Used mainly for spare parts

**Comments**



## 1938 Hillman 14 - Green Wreck 14



<b>Inventory Number:</b>	011
<b>Make:</b>	Hillman
<b>Model:</b>	14
<b>Year:</b>	1938
<b>Nickname:</b>	Green Wreck 14
<b>Location:</b>	Melbourne Metro
<b>Body Type:</b>	
<b>Colour:</b>	Green
<b>Transmission:</b>	
<b>Condition:</b>	Unrestored
<b>Registered:</b>	
<b>Spare Parts:</b>	Used mainly for spare parts

**Comments**



# 1938 Hillman 14 - Green Convert 14



<b>Inventory Number:</b>	012
<b>Make:</b>	Hillman
<b>Model:</b>	14
<b>Year:</b>	1938
<b>Nickname:</b>	Green Convert 14
<b>Location:</b>	Melbourne Metro
<b>Body Type:</b>	
<b>Colour:</b>	Green
<b>Transmission:</b>	
<b>Condition:</b>	Unrestored
<b>Registered:</b>	
<b>Spare Parts:</b>	Used mainly for spare parts

**Comments**



## 1938 Hillman Minx - Marty



<b>Inventory Number:</b>	013
<b>Make:</b>	Hillman
<b>Model:</b>	Minx
<b>Year:</b>	1938
<b>Nickname:</b>	Marty
<b>Location:</b>	Melbourne Metro
<b>Body Type:</b>	
<b>Colour:</b>	
<b>Transmission:</b>	
<b>Condition:</b>	Fair - On road and running
<b>Registered:</b>	Yes
<b>Spare Parts:</b>	N/A

**Comments**



## 1935? Hillman Minx - The Duck



<b>Inventory Number:</b>	014
<b>Make:</b>	Hillman
<b>Model:</b>	Minx
<b>Year:</b>	1935?
<b>Nickname:</b>	The Duck
<b>Location:</b>	Melbourne Metro
<b>Body Type:</b>	
<b>Colour:</b>	
<b>Transmission:</b>	
<b>Condition:</b>	Fair - On road and running
<b>Registered:</b>	Yes
<b>Spare Parts:</b>	N/A

**Comments**



# 1936 Hillman Minx - Green 36 Minx



<b>Inventory Number:</b>	015
<b>Make:</b>	Hillman
<b>Model:</b>	Minx
<b>Year:</b>	1936
<b>Nickname:</b>	Green 36 Minx
<b>Location:</b>	Melbourne Metro
<b>Body Type:</b>	
<b>Colour:</b>	
<b>Transmission:</b>	
<b>Condition:</b>	Fair - but runs
<b>Registered:</b>	No
<b>Spare Parts:</b>	N/A

**Comments**



## 1936 Hillman Minx - Brown 36 Farm Minx



<b>Inventory Number:</b>	016
<b>Make:</b>	Hillman
<b>Model:</b>	Minx
<b>Year:</b>	1936
<b>Nickname:</b>	Brown 36 Farm Minx
<b>Location:</b>	Melbourne Metro
<b>Body Type:</b>	
<b>Colour:</b>	Brown
<b>Transmission:</b>	
<b>Condition:</b>	Fair - but runs
<b>Registered:</b>	No
<b>Spare Parts:</b>	N/A

**Comments**



# 1938 Hillman Minx - Spare Blue Minx



<b>Inventory Number:</b>	017
<b>Make:</b>	Hillman
<b>Model:</b>	Minx
<b>Year:</b>	1938
<b>Nickname:</b>	Spare Blue Minx
<b>Location:</b>	Melbourne Metro
<b>Body Type:</b>	
<b>Colour:</b>	Blue
<b>Transmission:</b>	
<b>Condition:</b>	Unrestored
<b>Registered:</b>	No
<b>Spare Parts:</b>	Used mainly for spare parts

**Comments**



# 1938 Hillman Minx - Spare Black Minx



<b>Inventory Number:</b>	018
<b>Make:</b>	Hillman
<b>Model:</b>	Minx
<b>Year:</b>	1938
<b>Nickname:</b>	Spare Black Minx
<b>Location:</b>	Melbourne Metro
<b>Body Type:</b>	
<b>Colour:</b>	Black
<b>Transmission:</b>	
<b>Condition:</b>	Unrestored
<b>Registered:</b>	No
<b>Spare Parts:</b>	Used mainly for spare parts

**Comments**



# 1938 Hillman Minx - Spare Cream Minx



<b>Inventory Number:</b>	019
<b>Make:</b>	Hillman
<b>Model:</b>	Minx
<b>Year:</b>	1938
<b>Nickname:</b>	Spare Cream Minx
<b>Location:</b>	Melbourne Metro
<b>Body Type:</b>	
<b>Colour:</b>	Cream
<b>Transmission:</b>	
<b>Condition:</b>	Unrestored
<b>Registered:</b>	No
<b>Spare Parts:</b>	Used mainly for spare parts

**Comments**



## 1938 Hillman Minx - Half Minx



<b>Inventory Number:</b>	020
<b>Make:</b>	Hillman
<b>Model:</b>	Minx
<b>Year:</b>	1938
<b>Nickname:</b>	Half Minx
<b>Location:</b>	Melbourne Metro
<b>Body Type:</b>	
<b>Colour:</b>	
<b>Transmission:</b>	
<b>Condition:</b>	Unrestored - only front section in rusty condition
<b>Registered:</b>	No
<b>Spare Parts:</b>	Used mainly for spare parts

**Comments**

